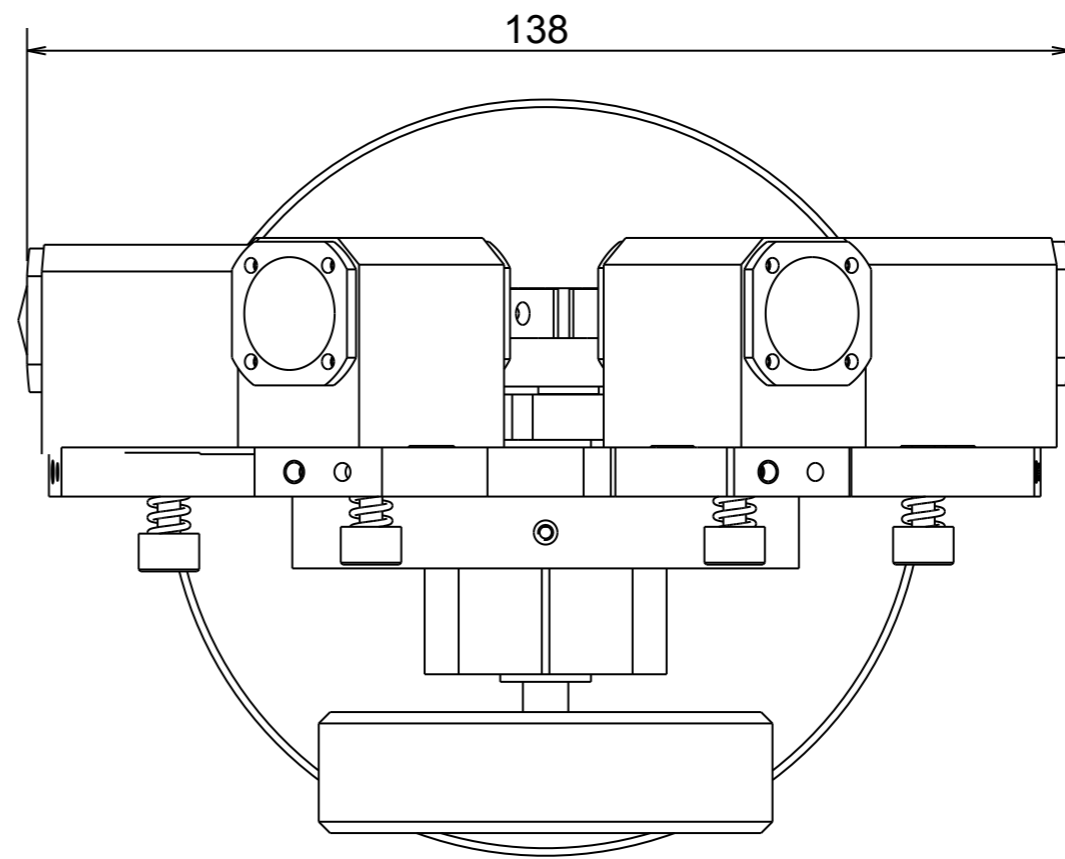
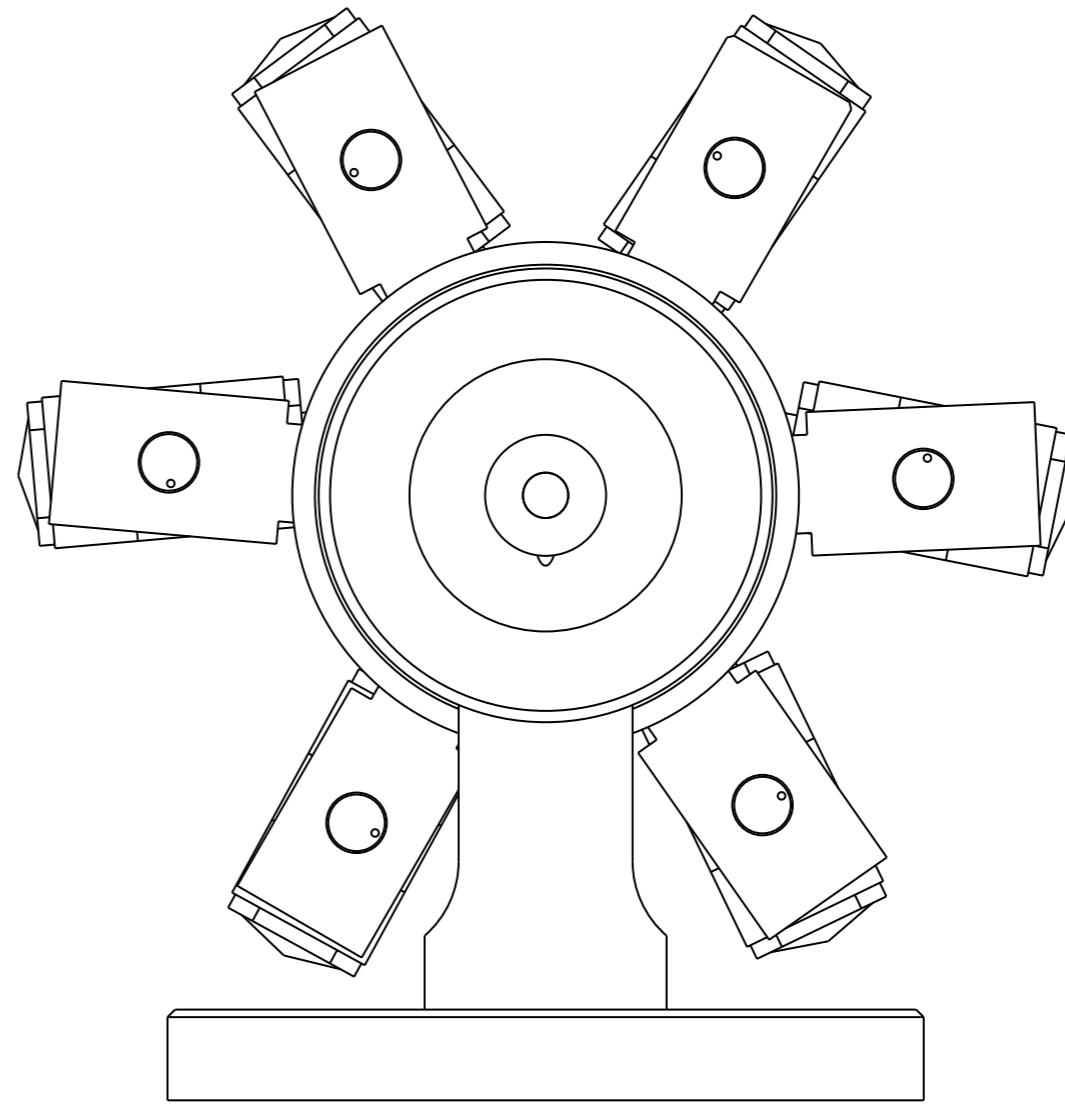
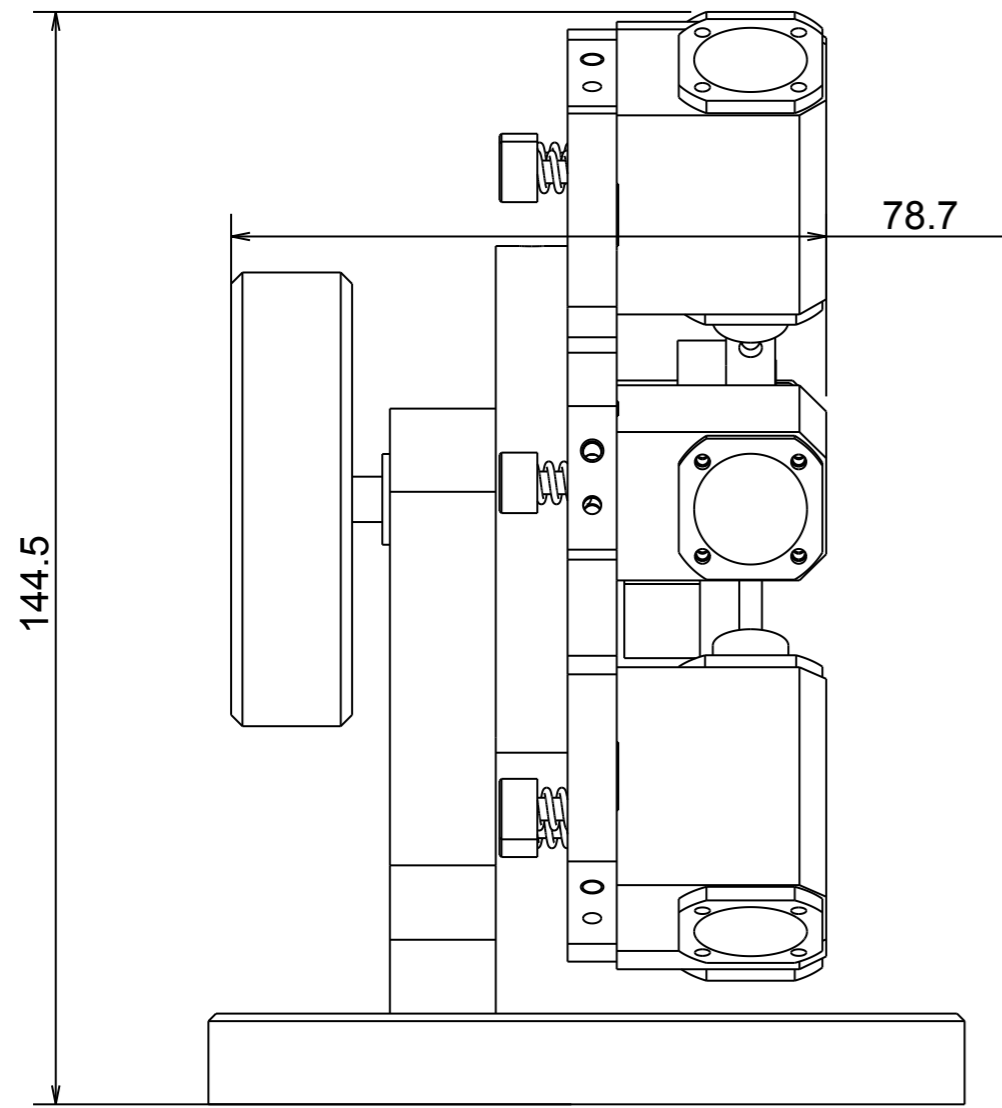
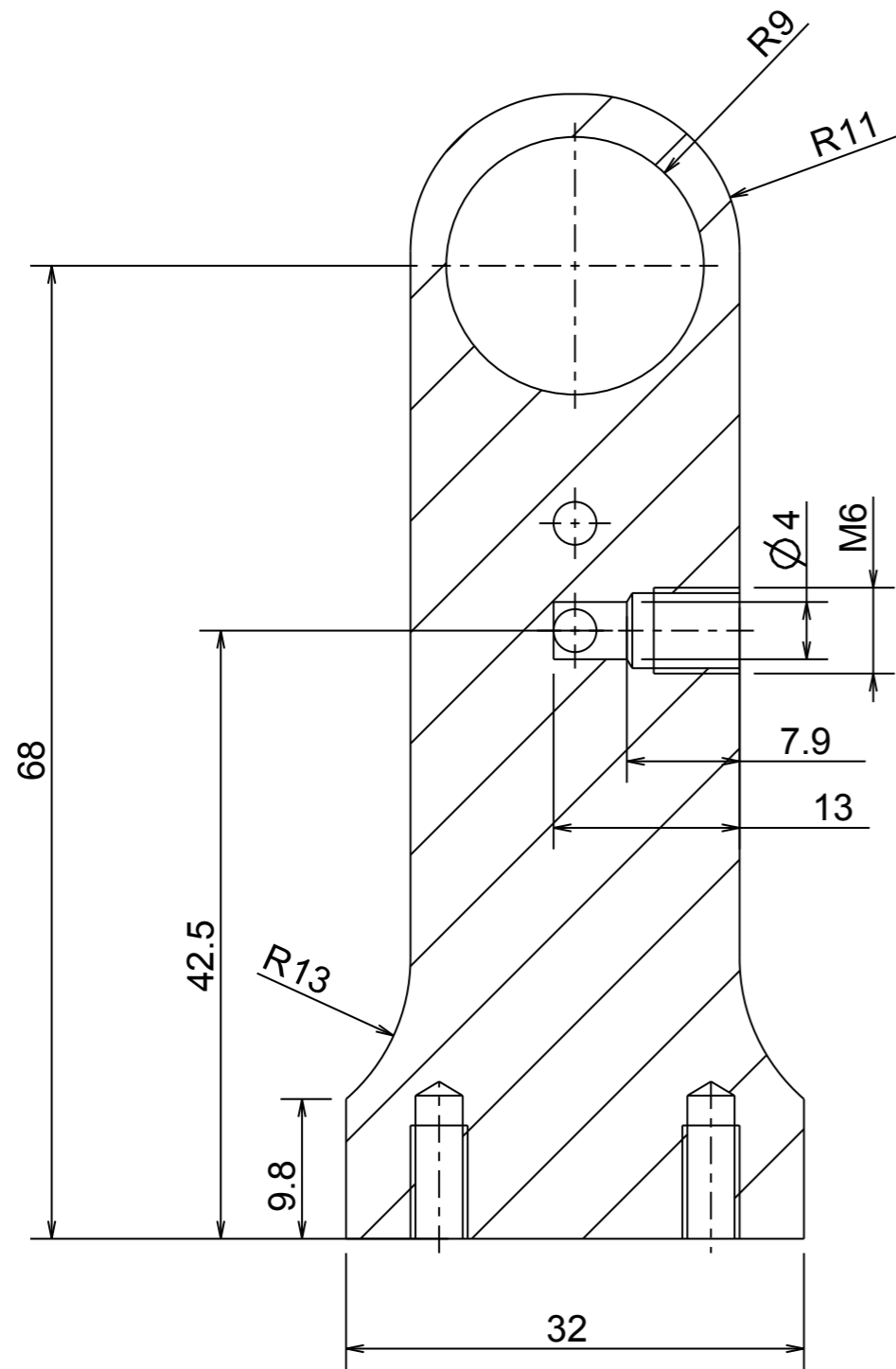
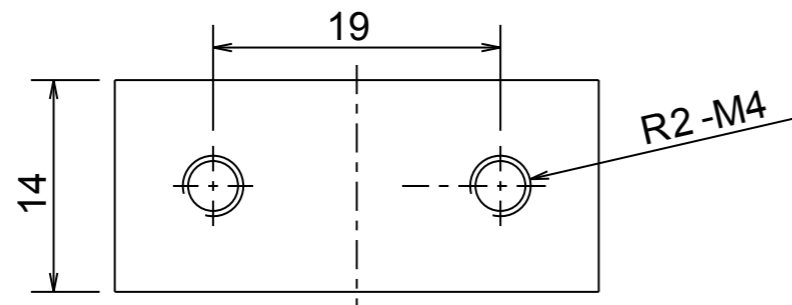


## Hula-Hula oscillant en étoile

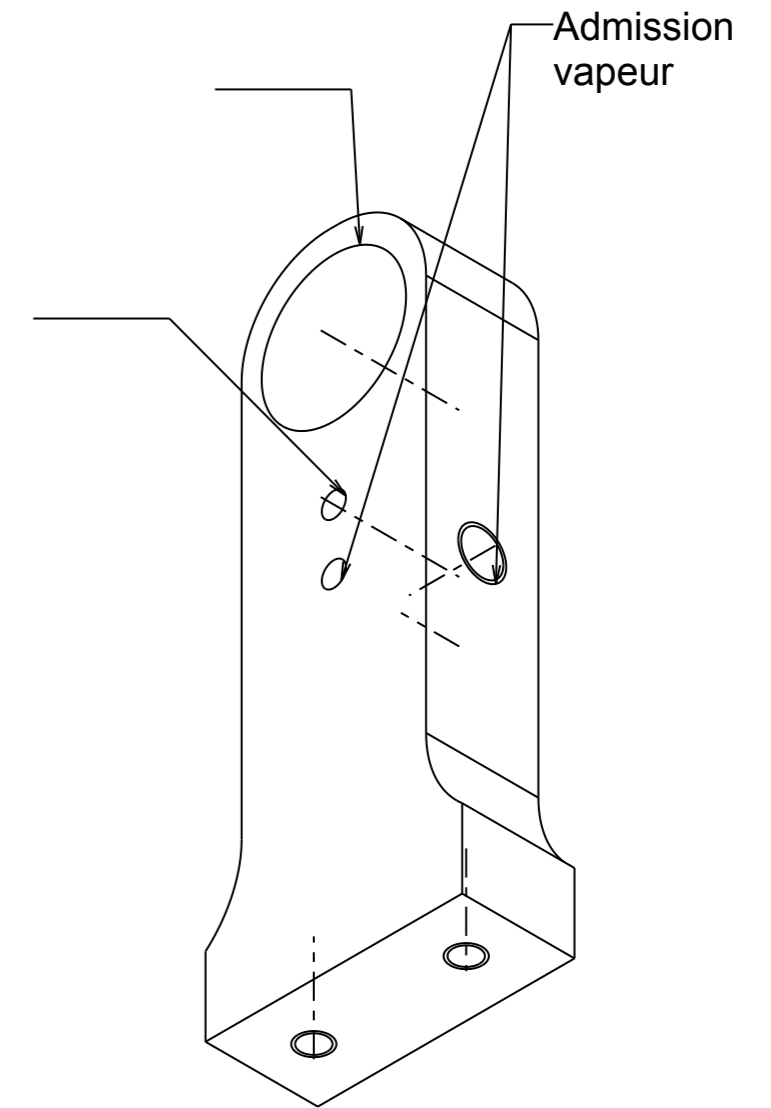
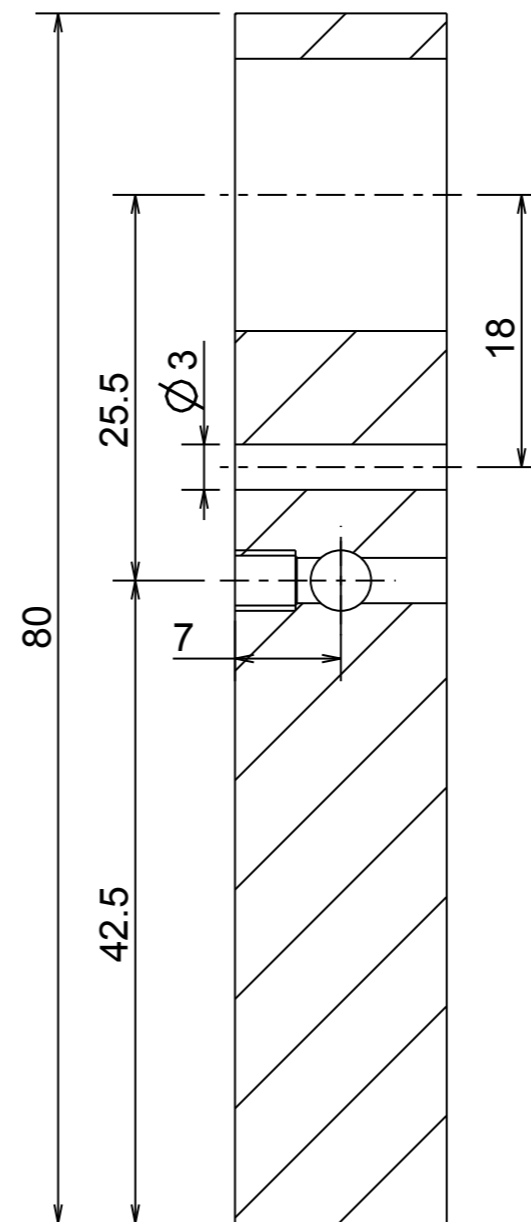
design original publié dans "Two shop masters - Village Press Publication"



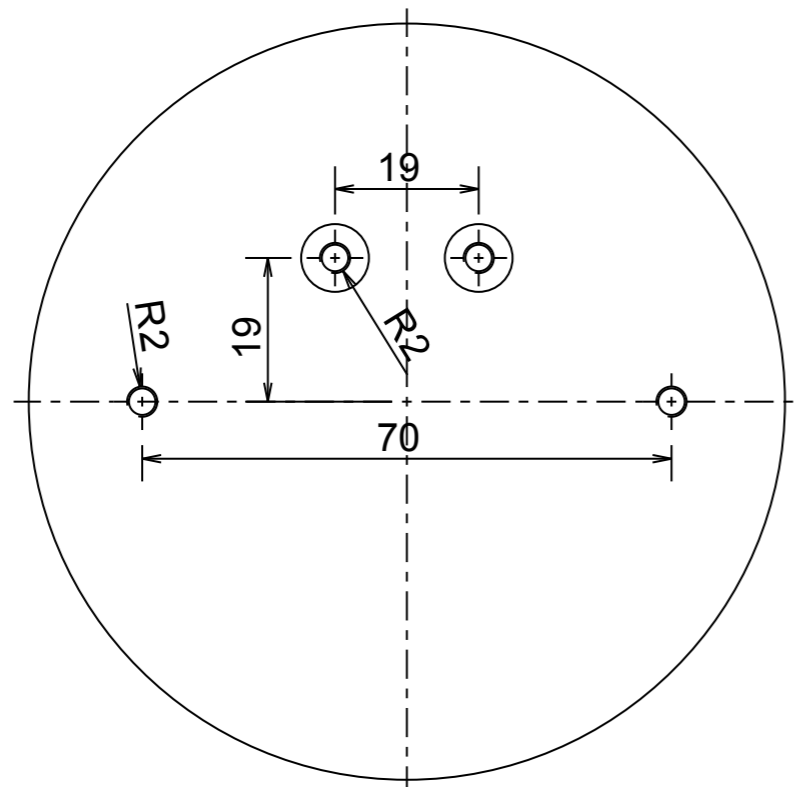
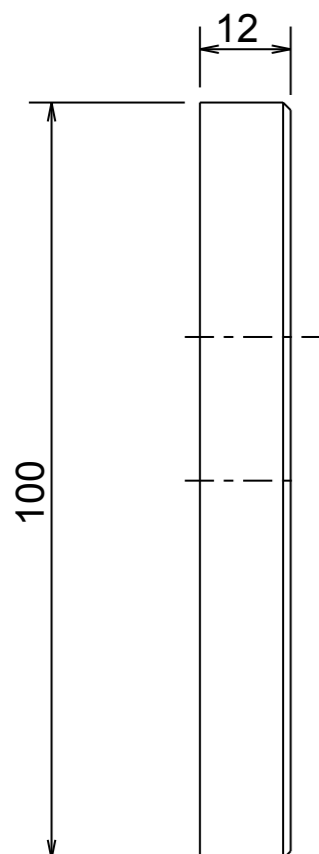


Palier porte corps

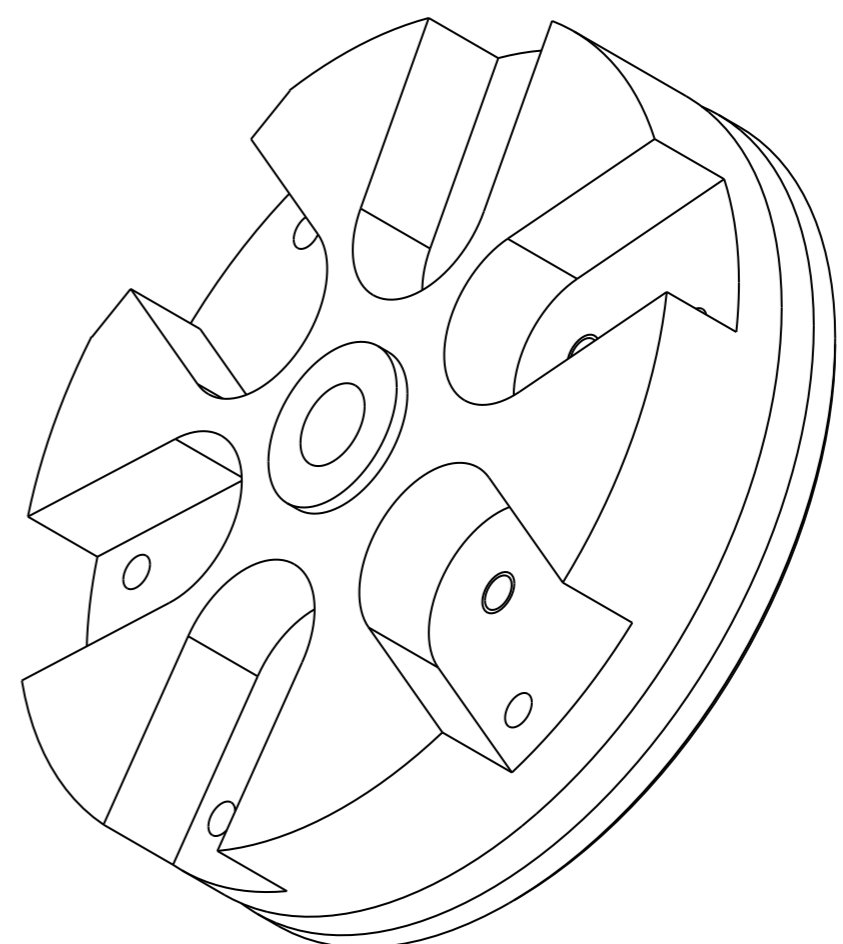
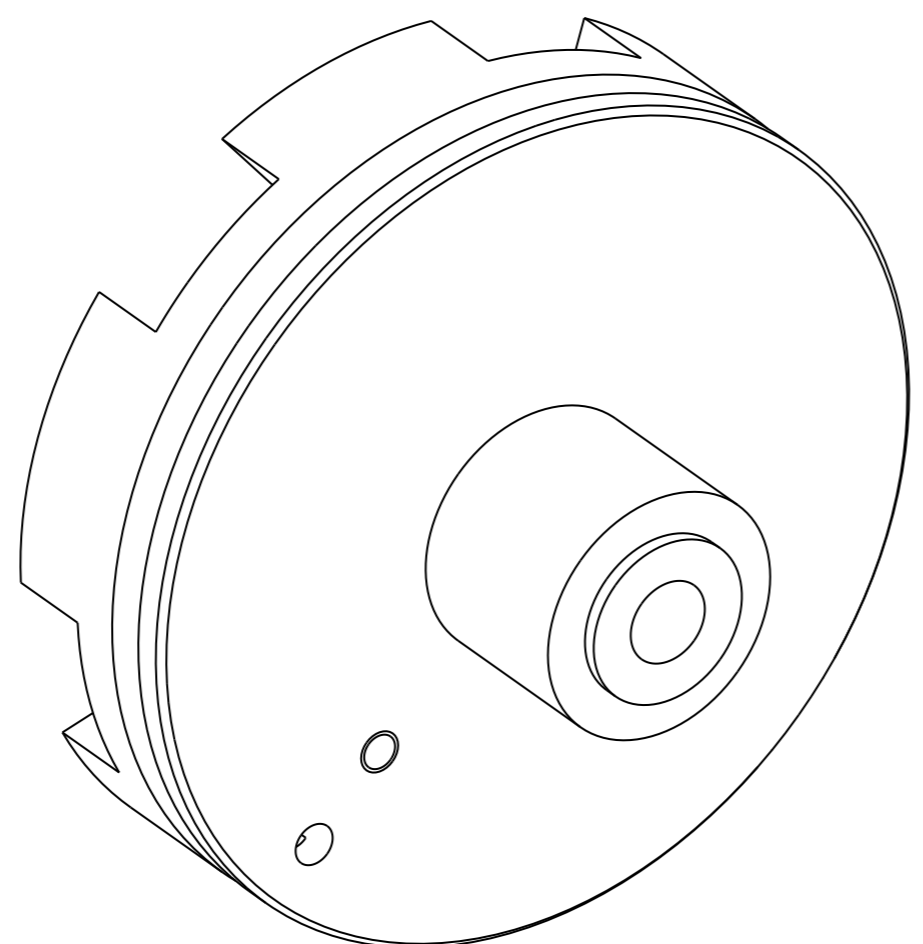
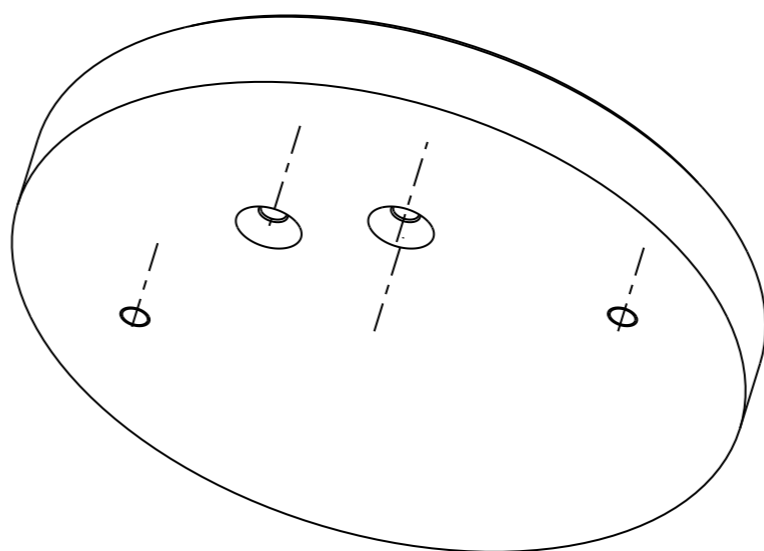
Fixation corps



Pilier

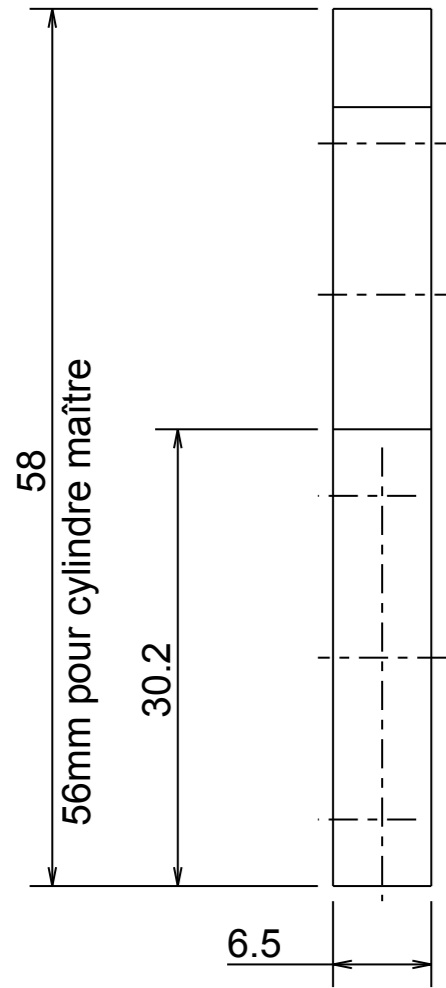


Socle

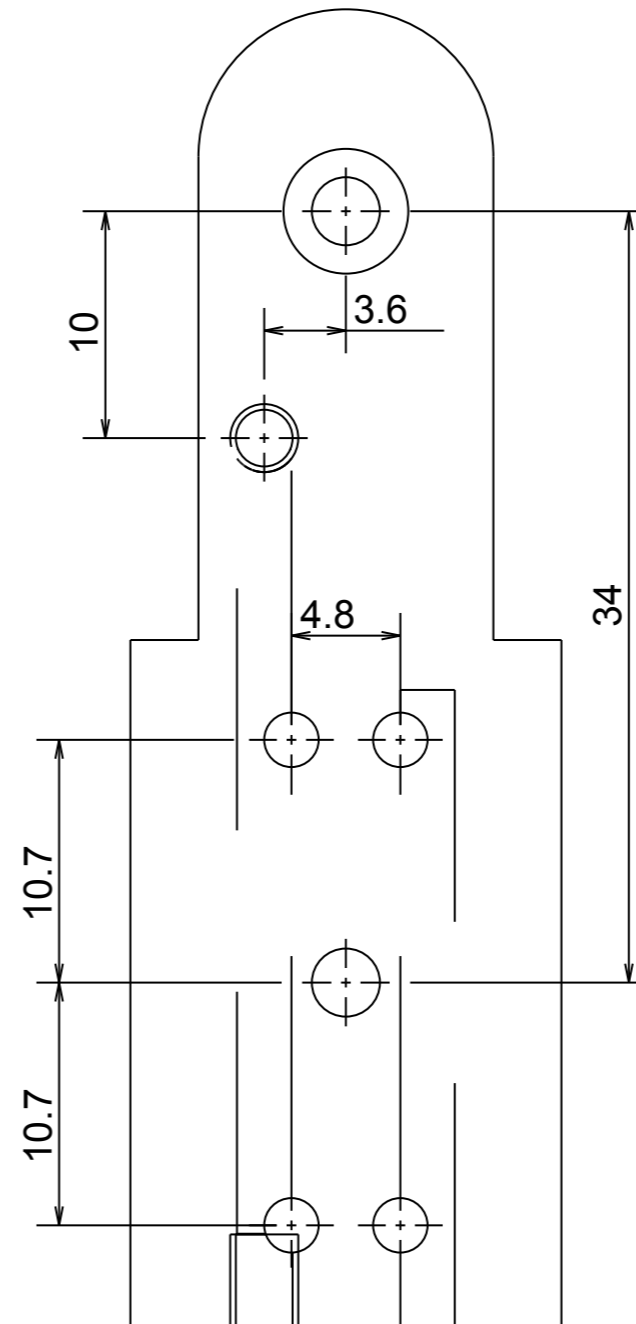
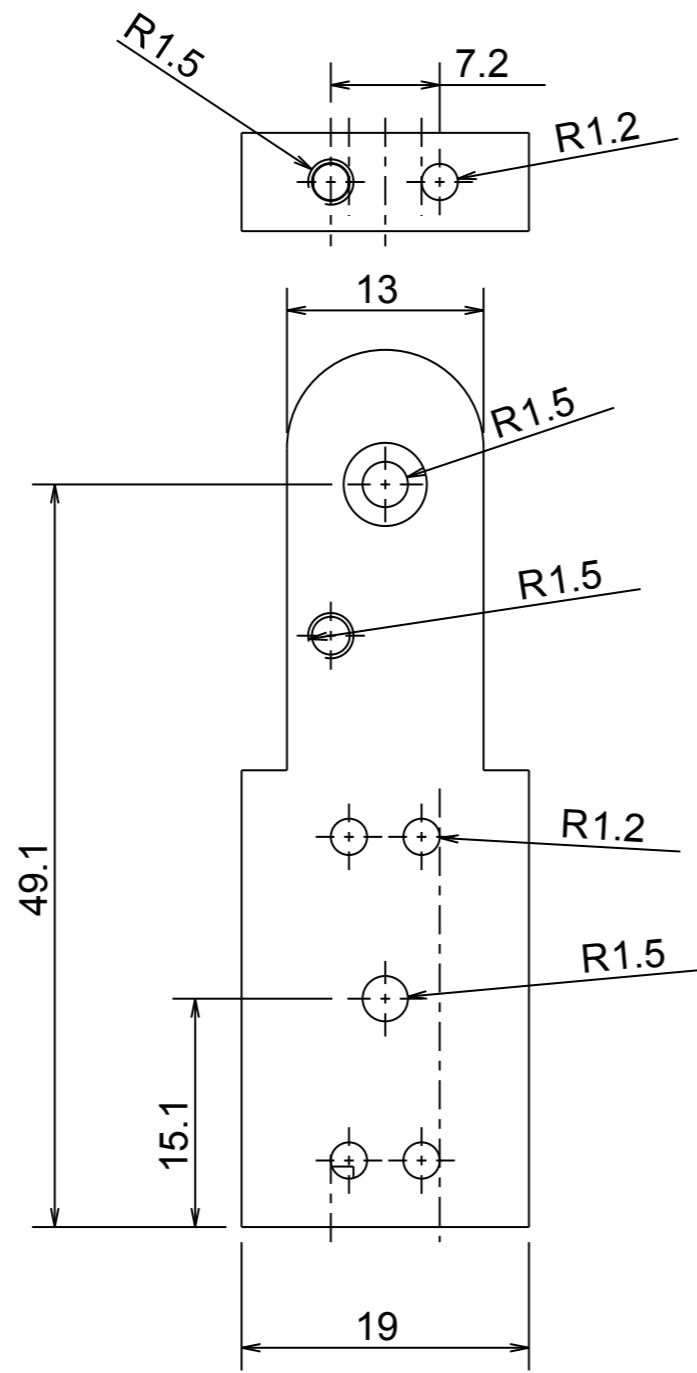


Corps porte cylindres

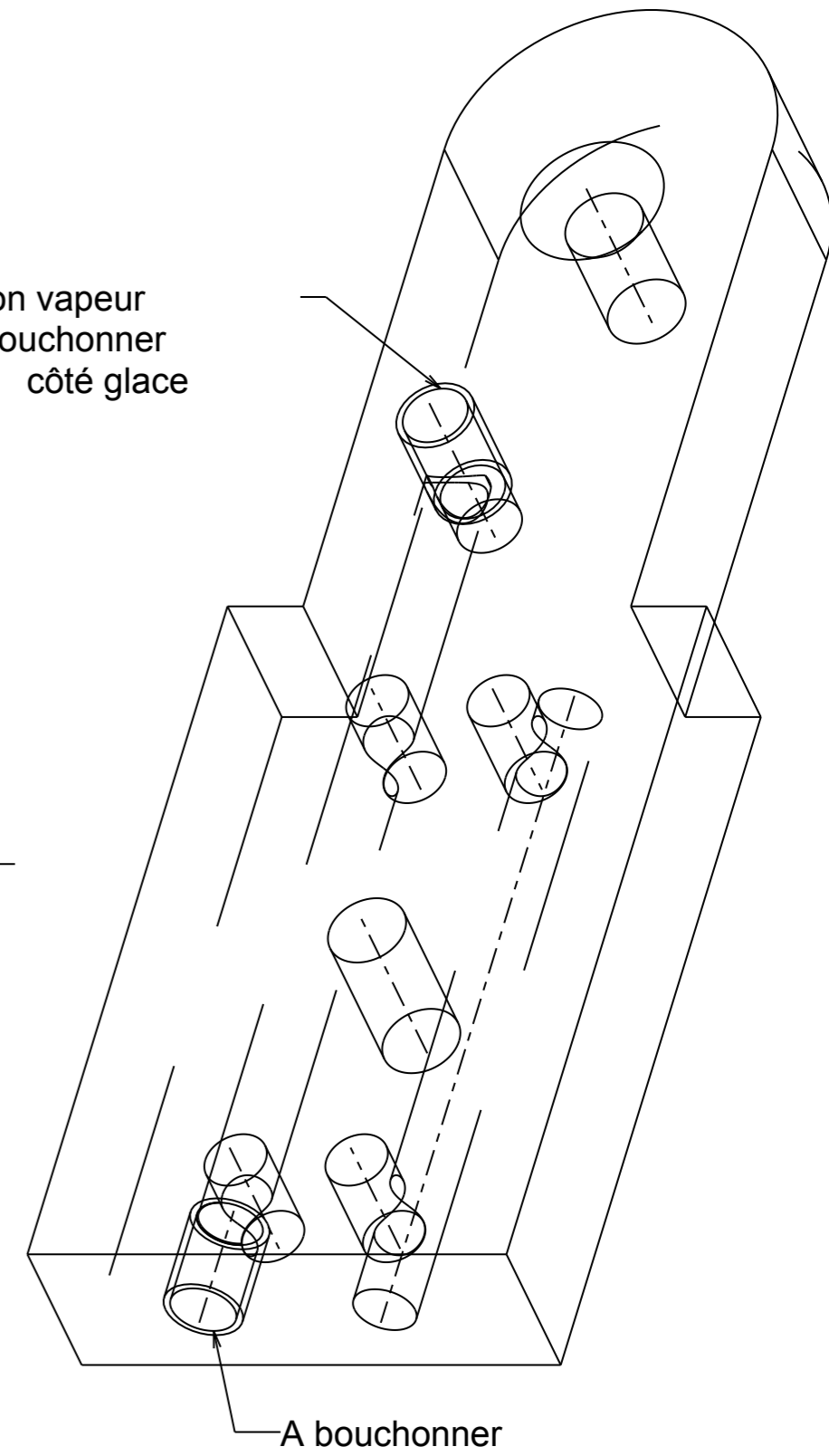


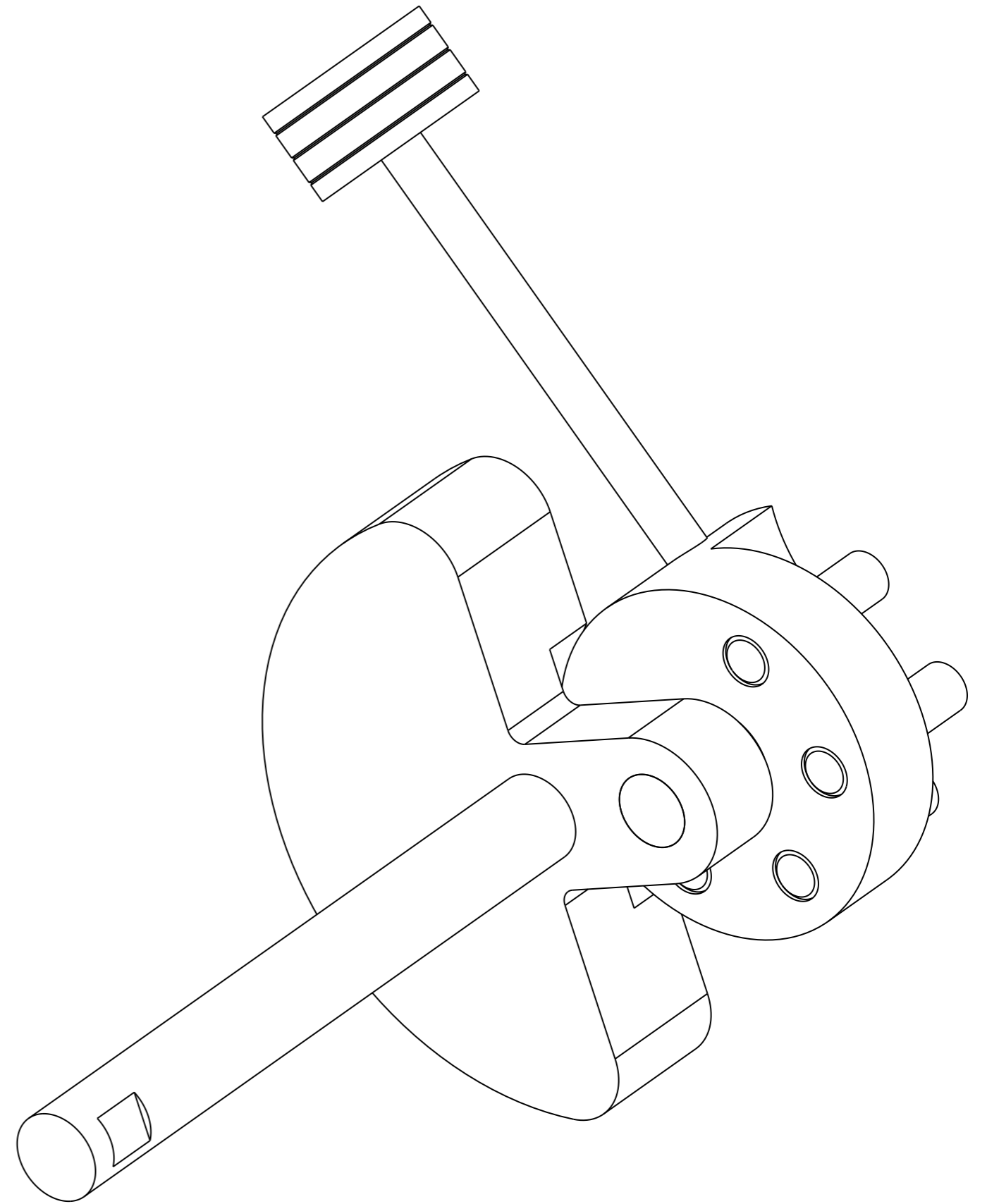
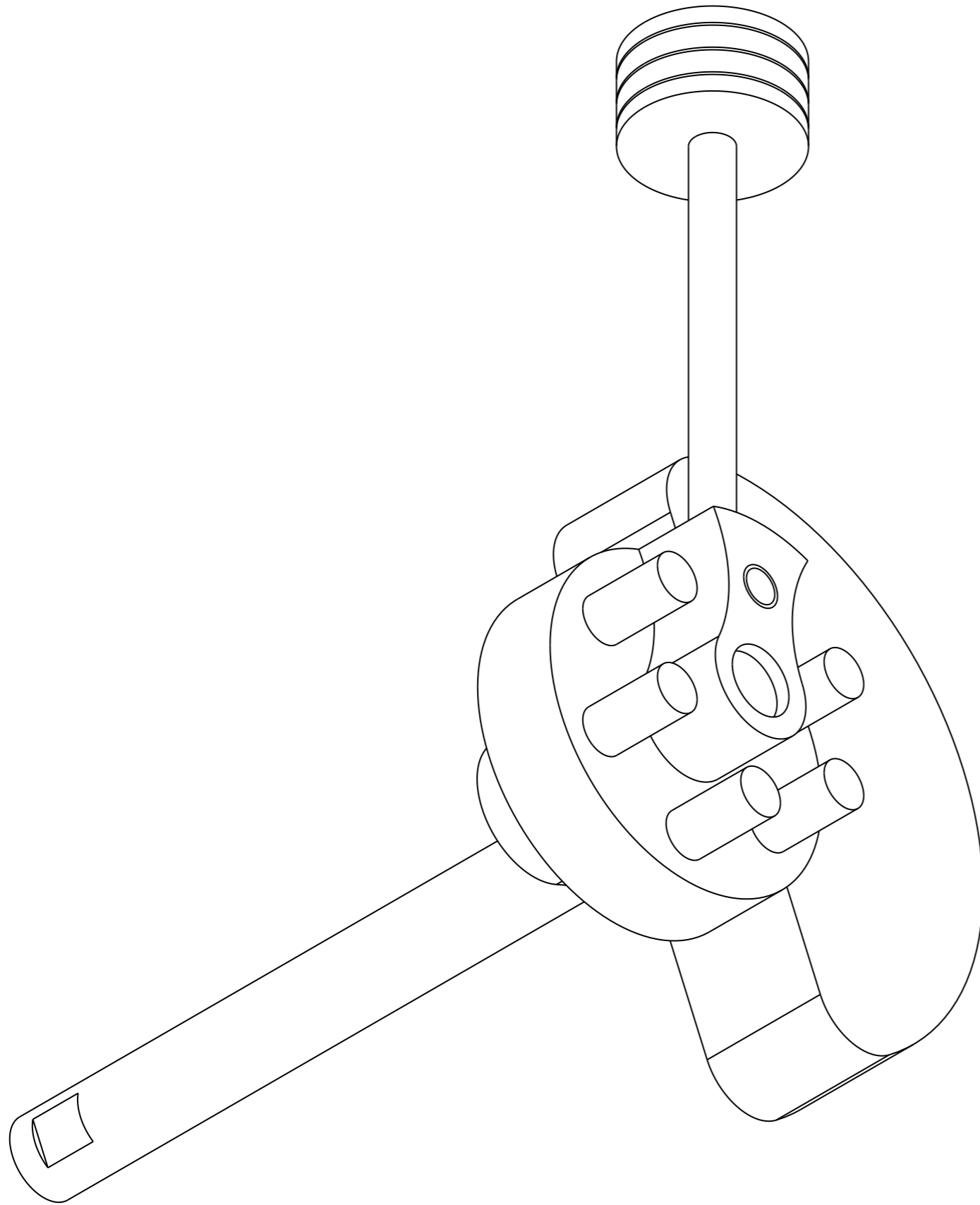


Glace de cylindre

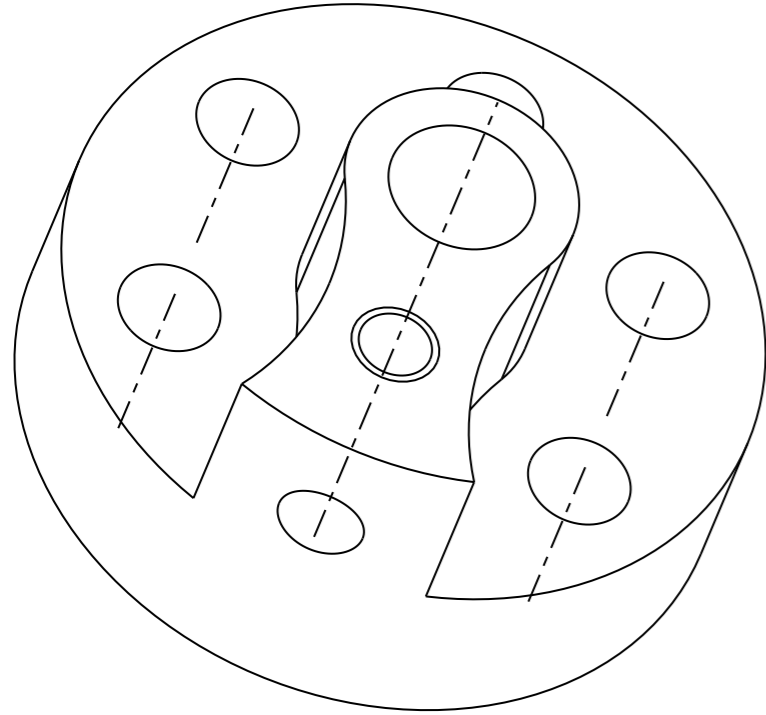
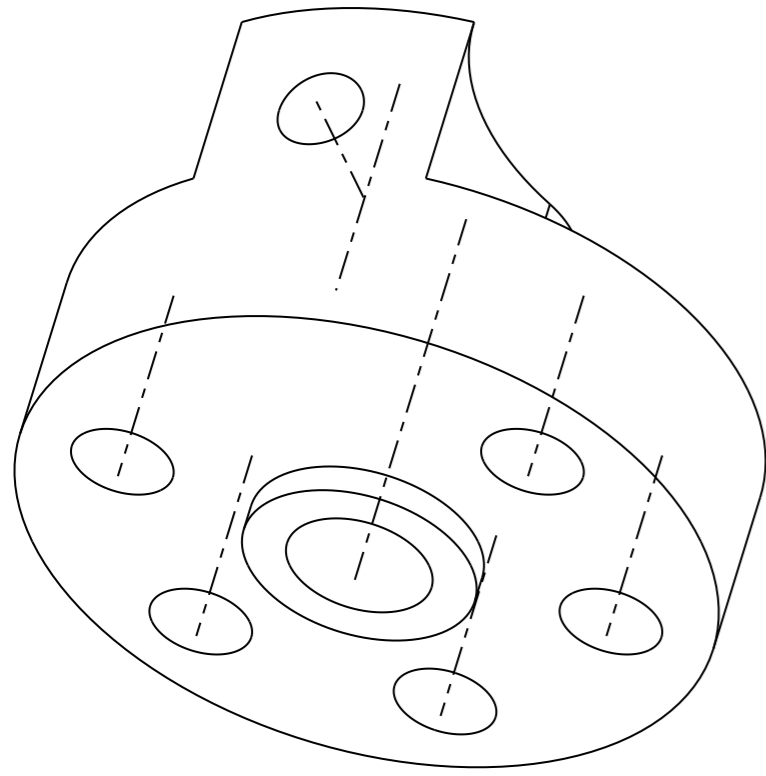


Admission vapeur  
A bouchonner  
côté glace

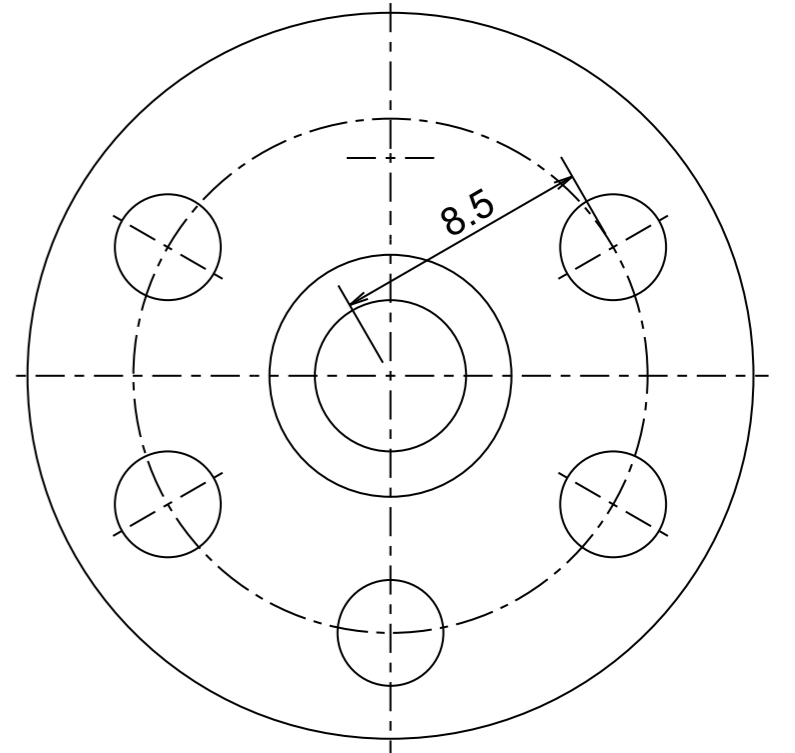
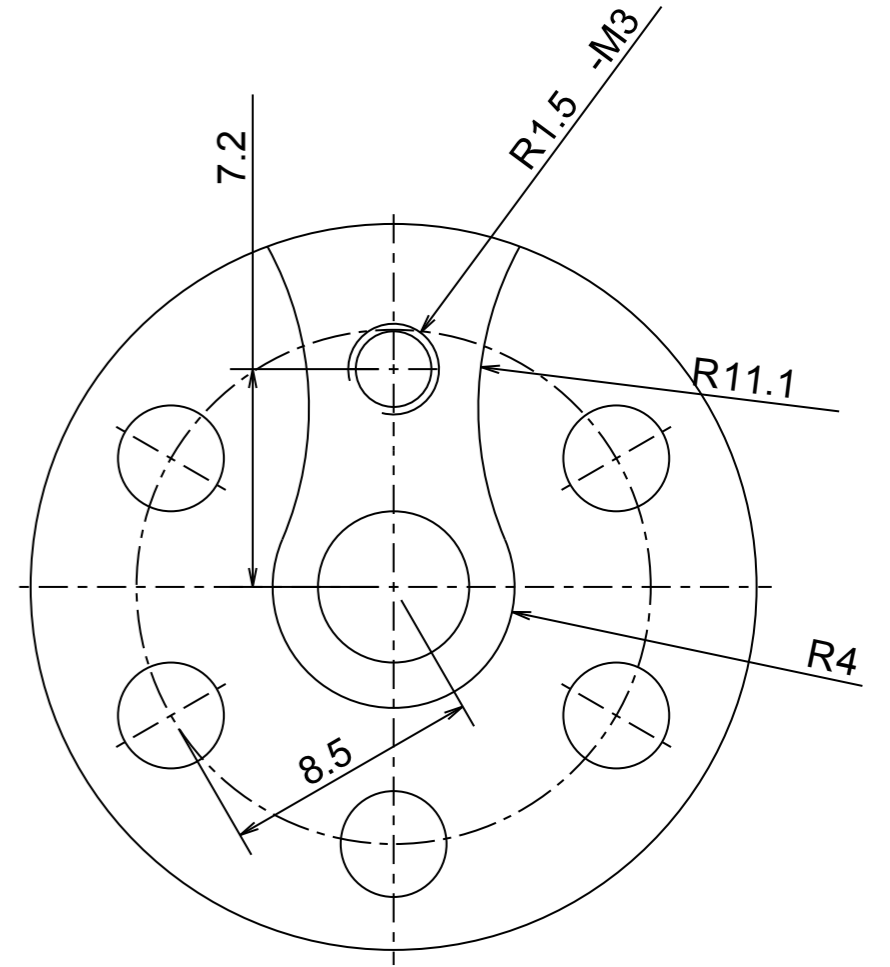
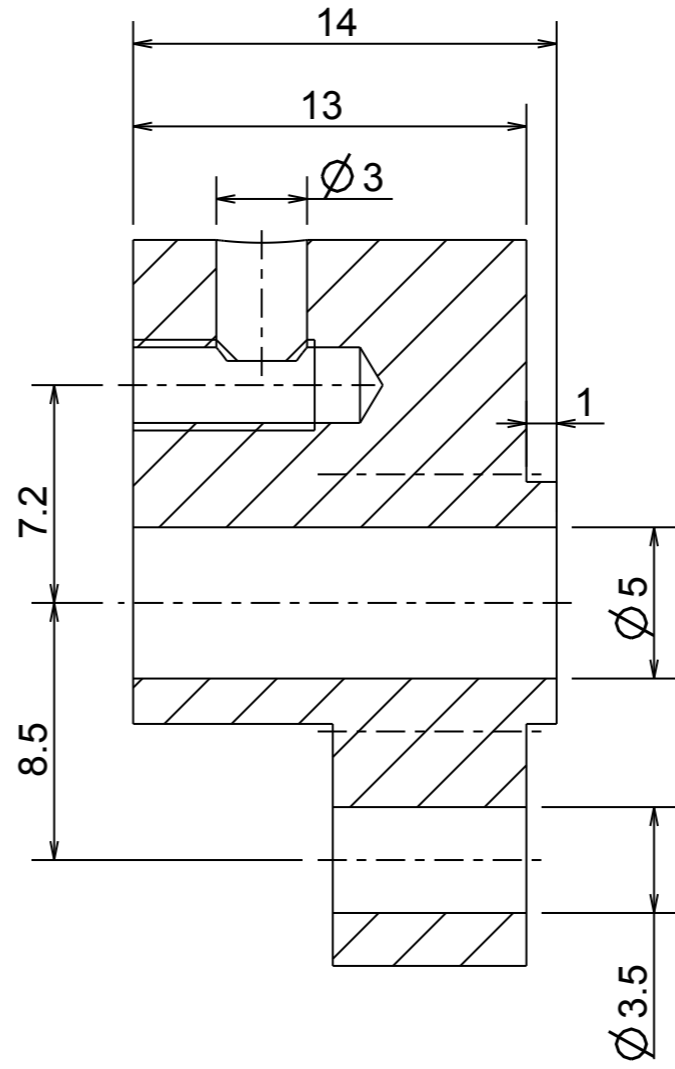
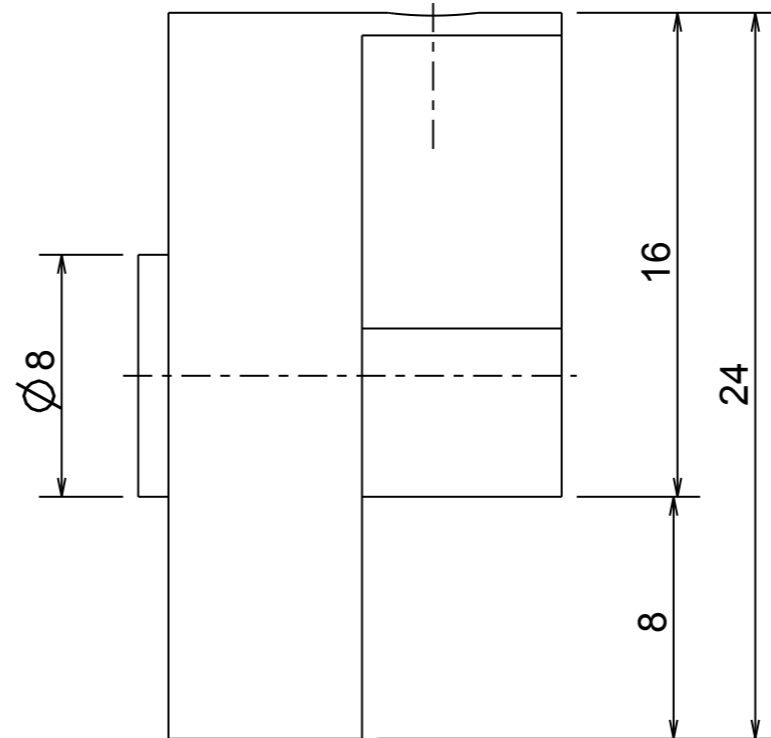
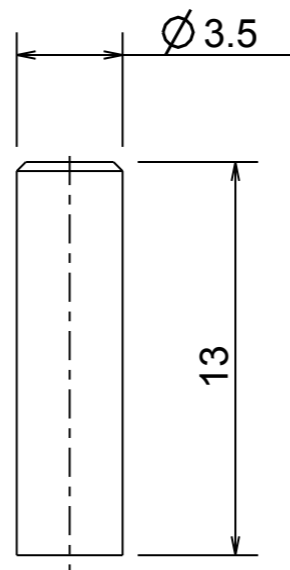




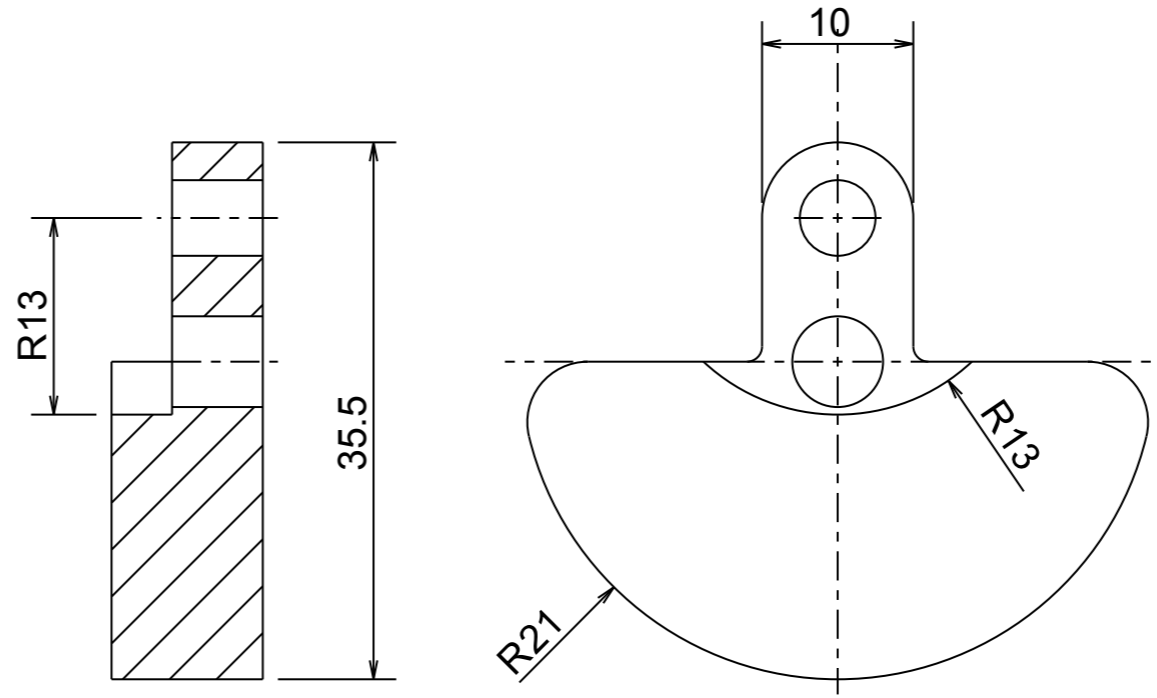
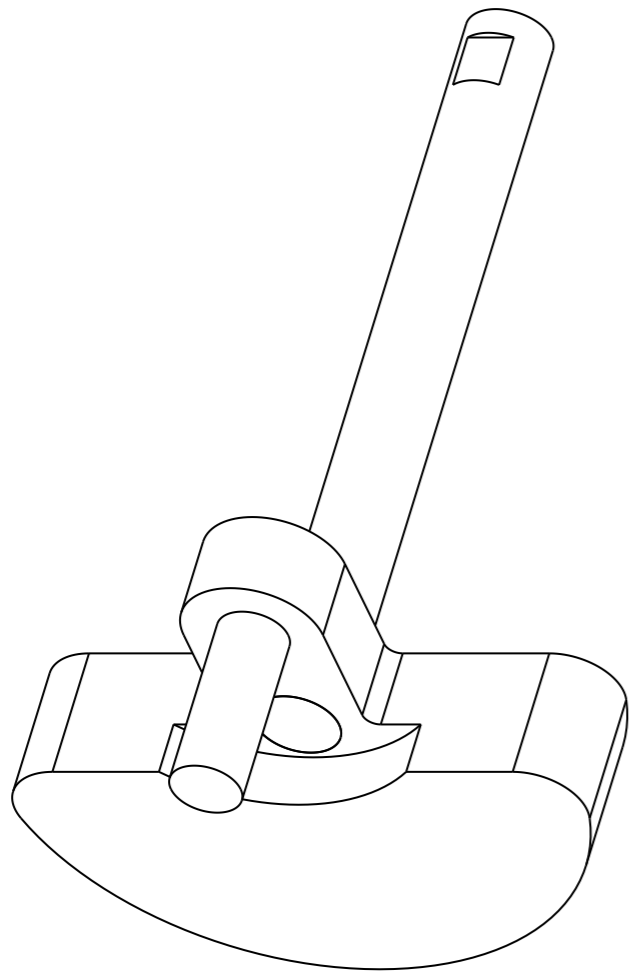
Vilebrequin avec piston maître



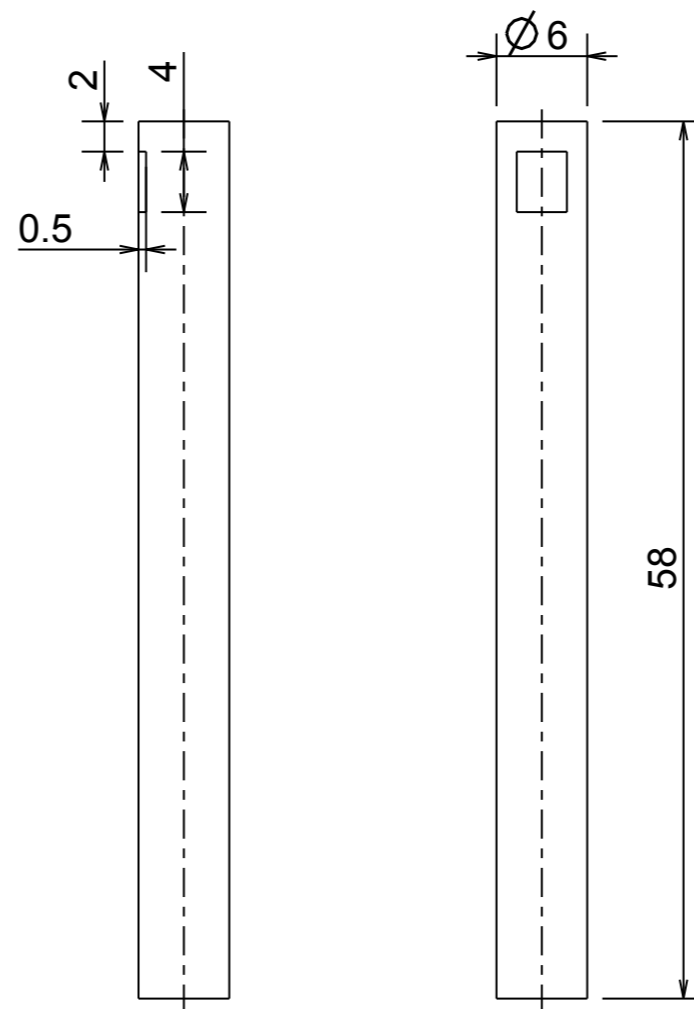
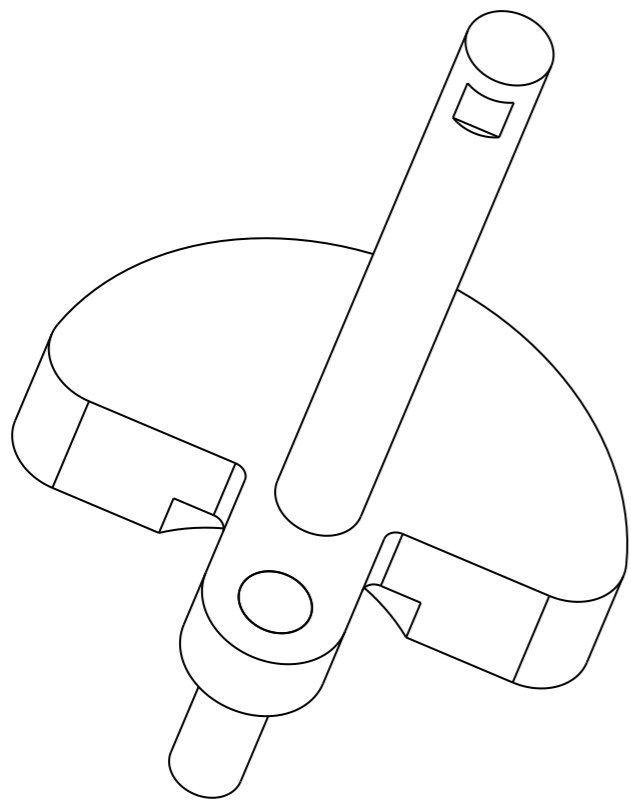
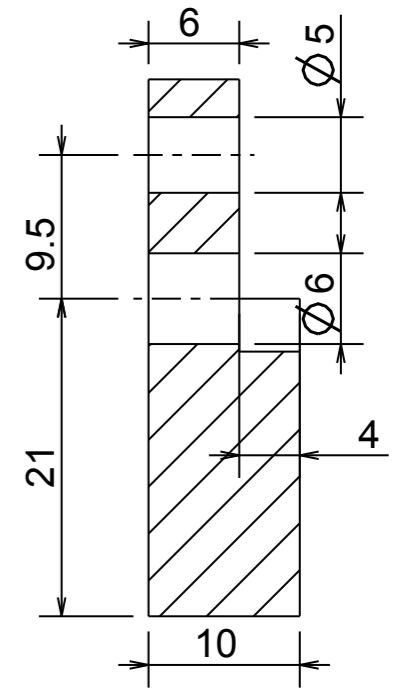
Axe piston esclave



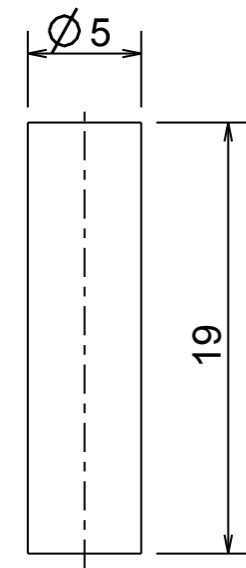




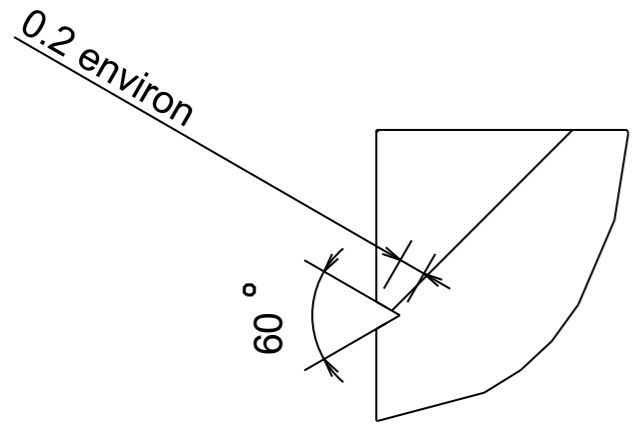
Volant de maneton



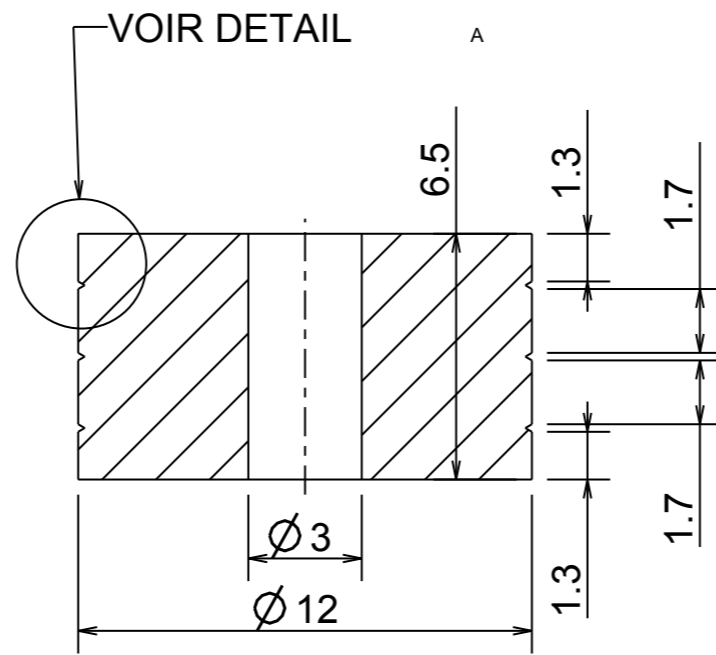
Arbre



Maneton

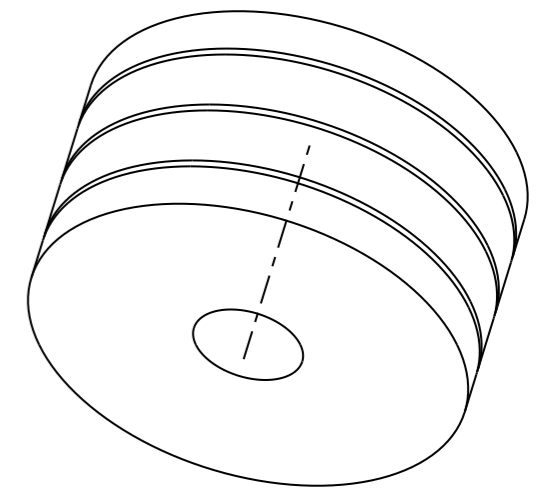


DETAIL A  
ECHELLE 18.000

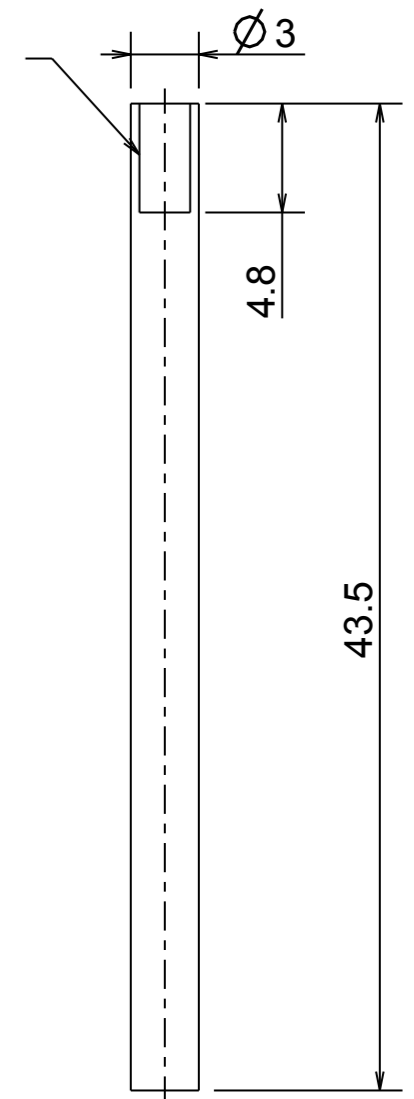


Espacement chicanes  
d'étanchéité  
non critique

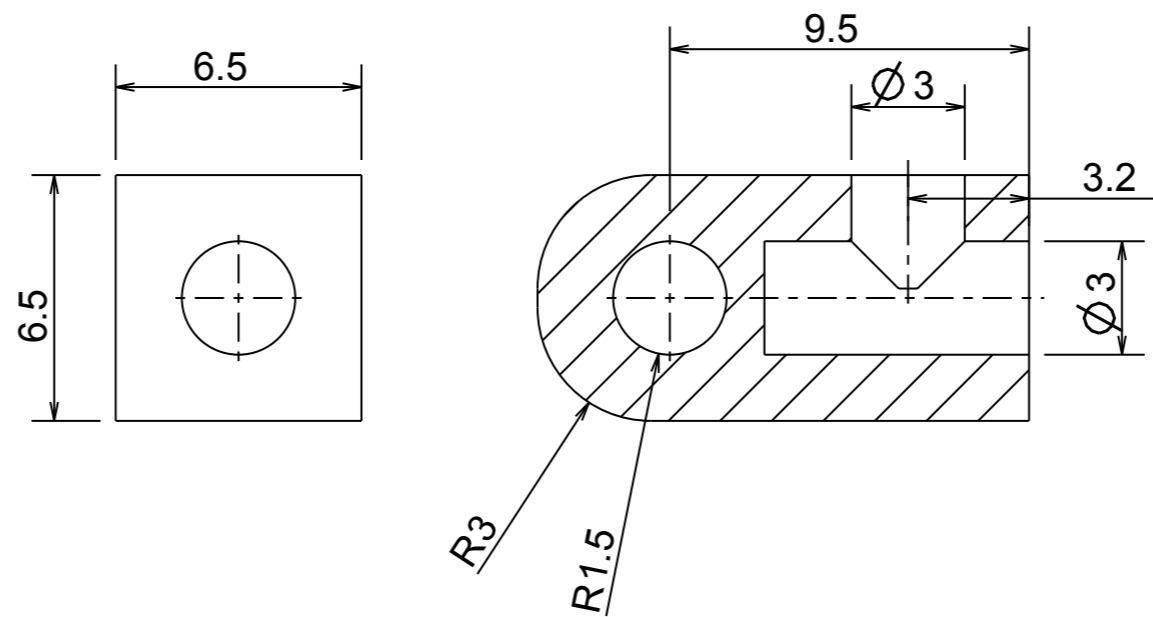
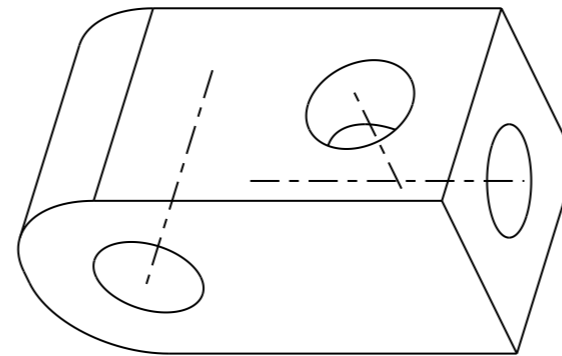
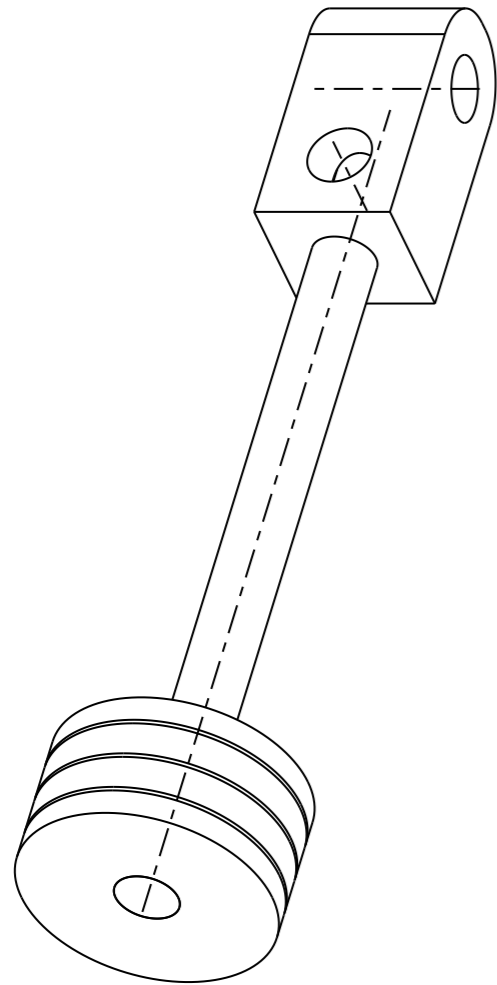
Piston



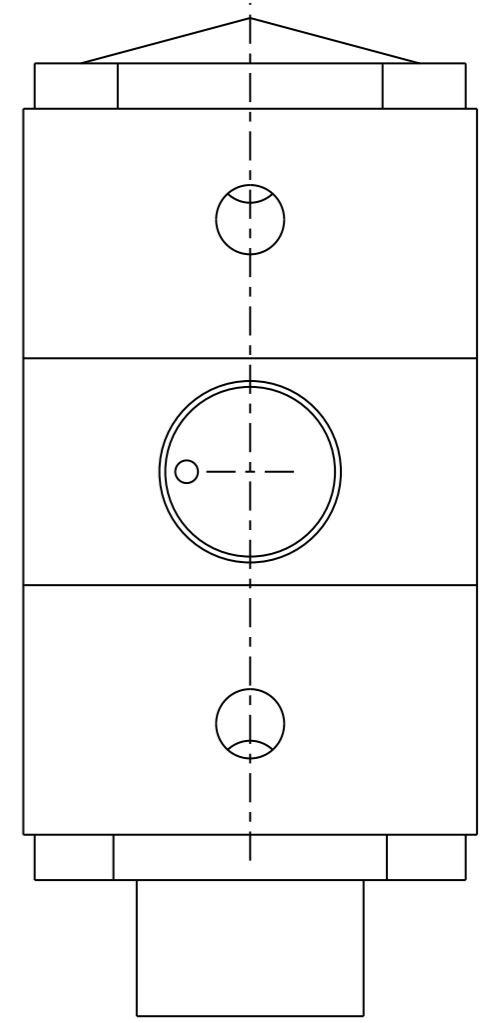
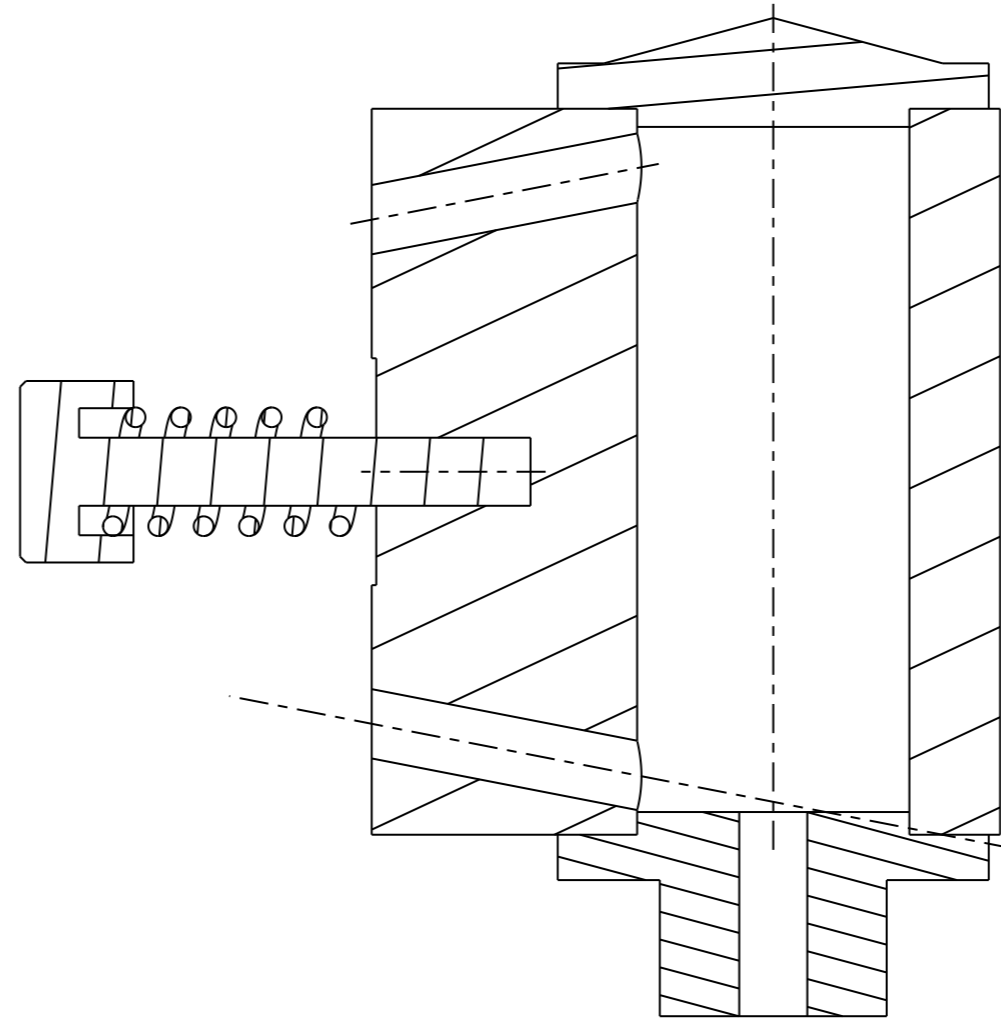
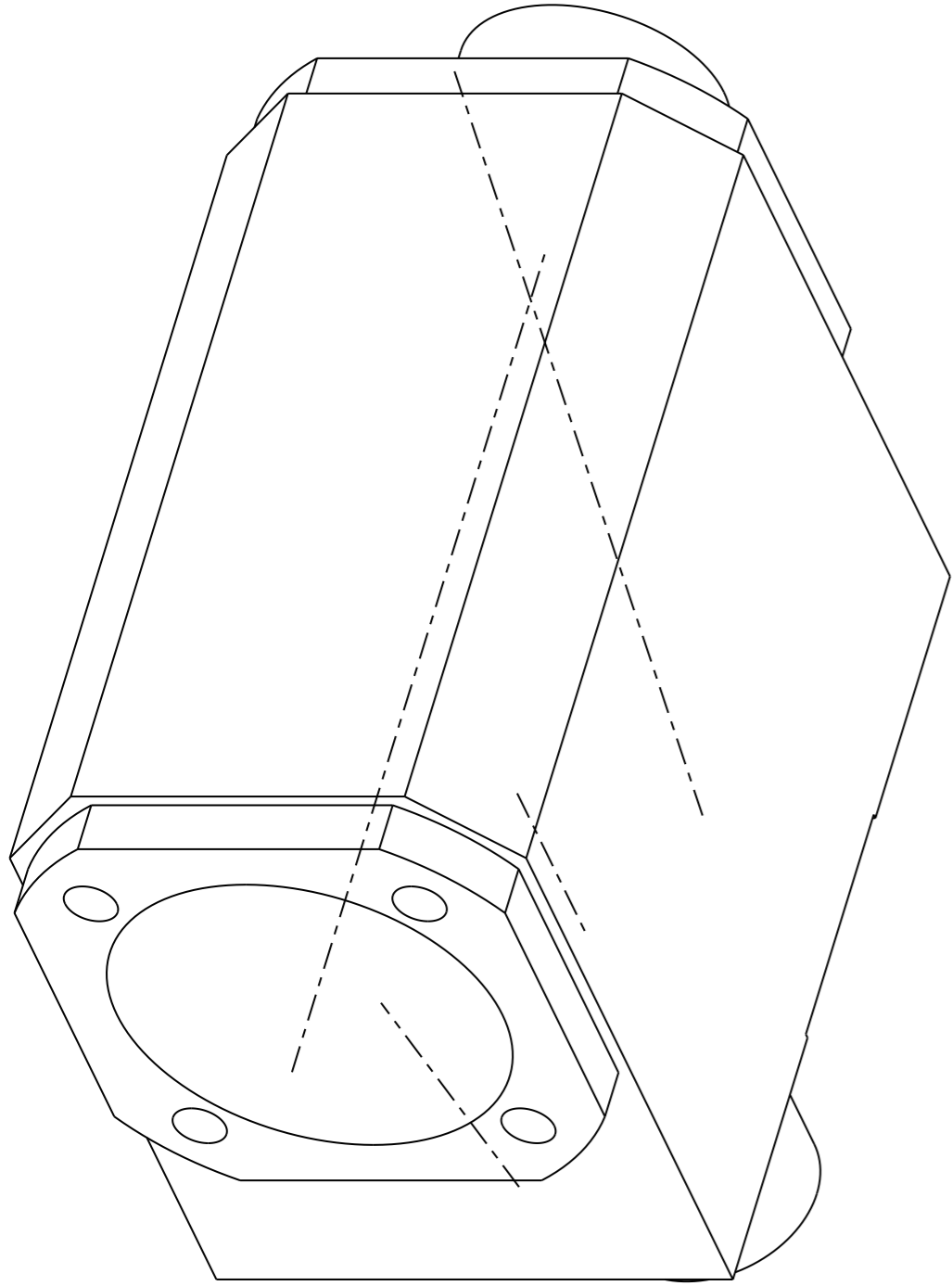
Méplat e=environ 0.5mm



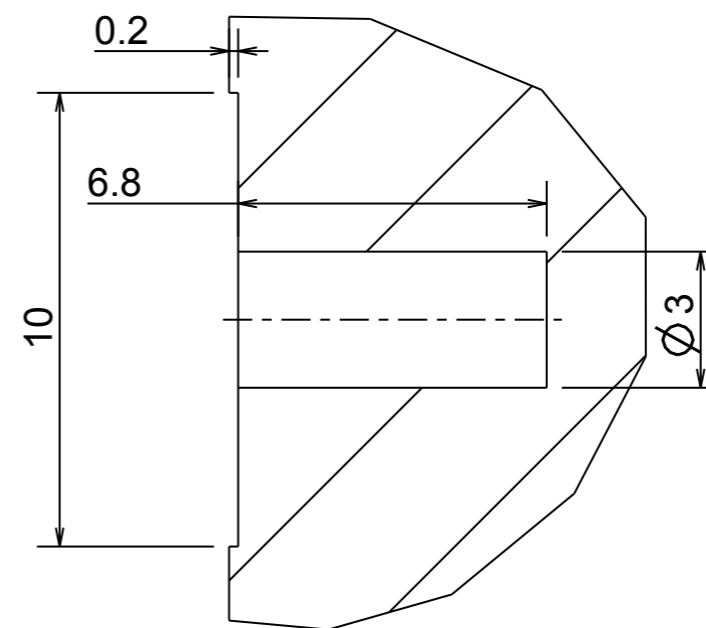
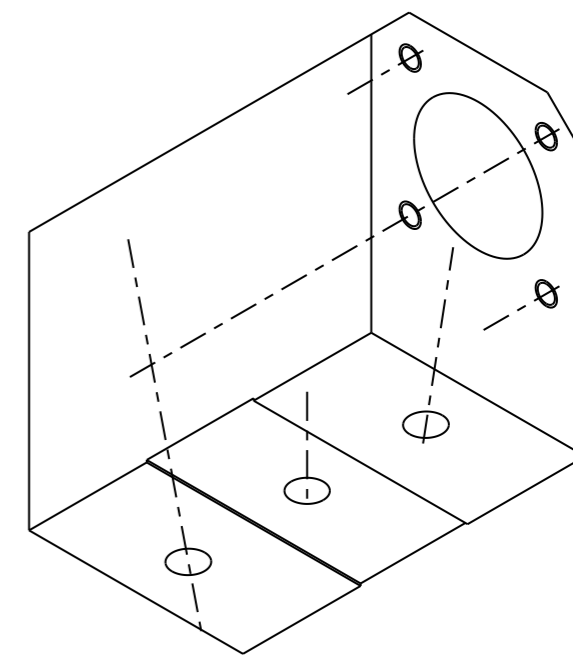
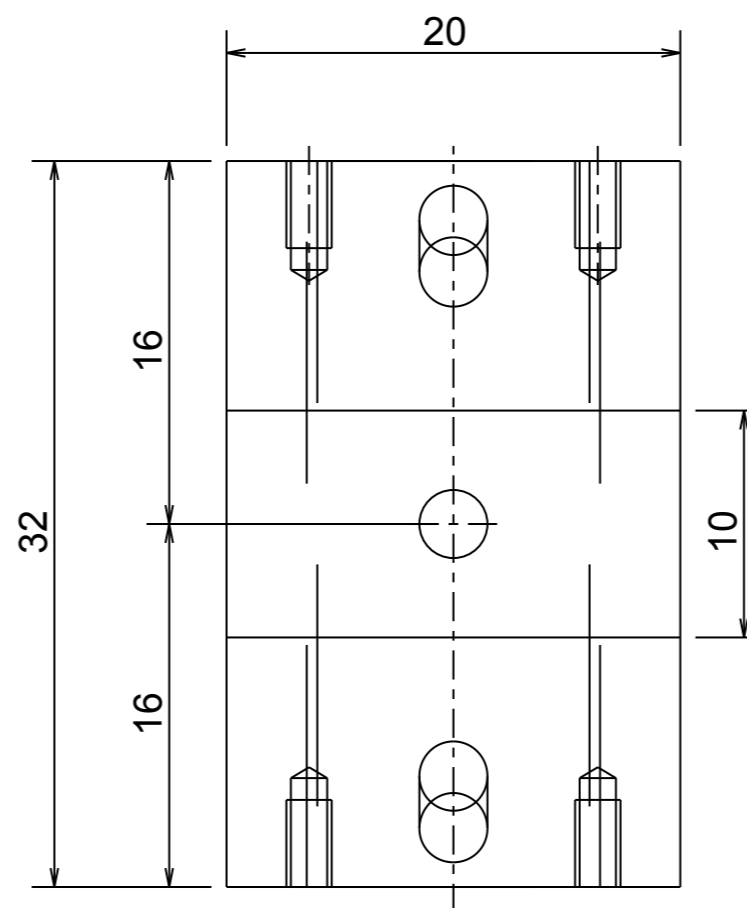
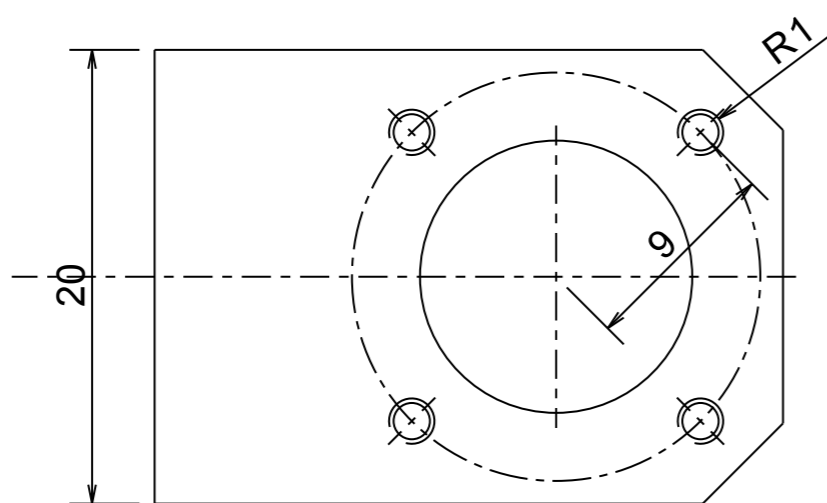
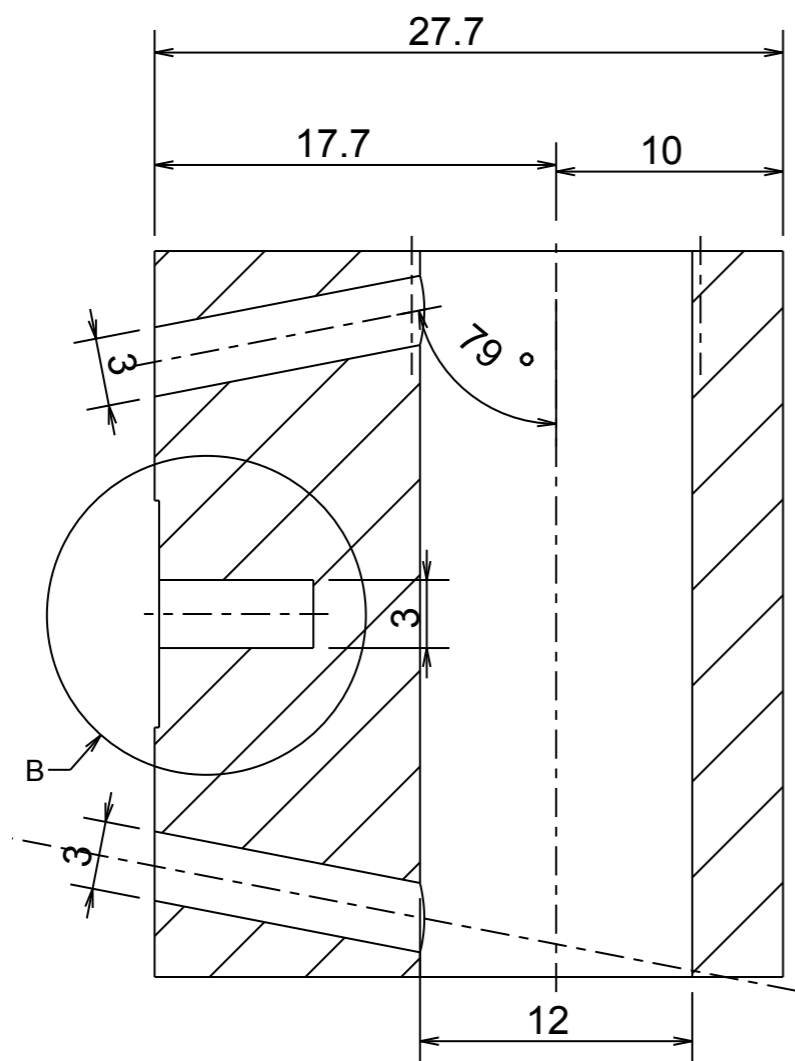
Tige de piston



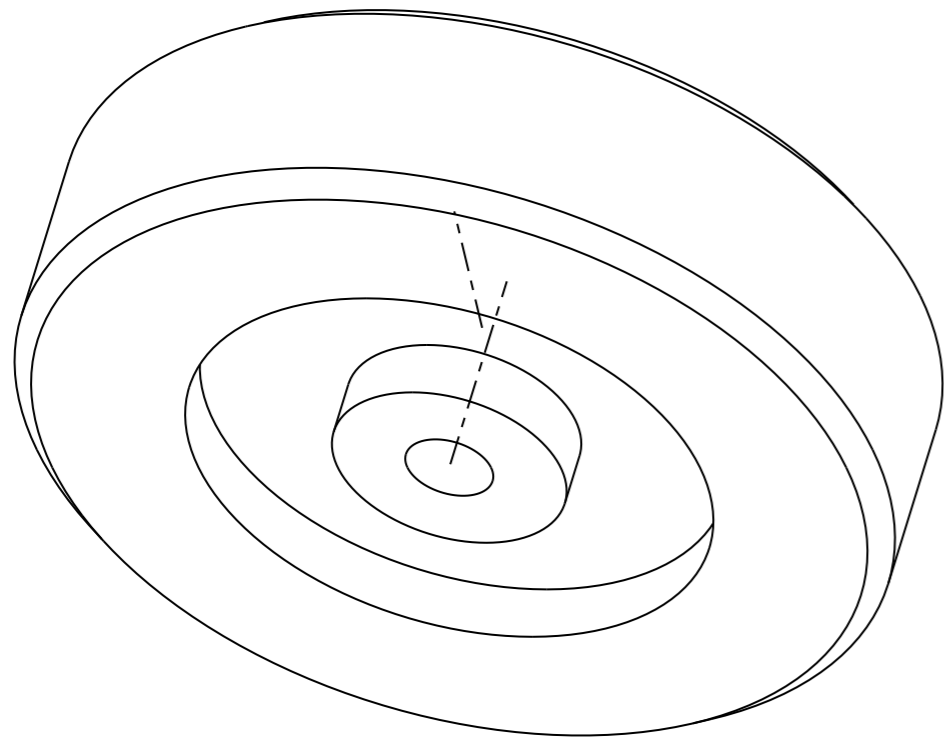
Chape piston esclave



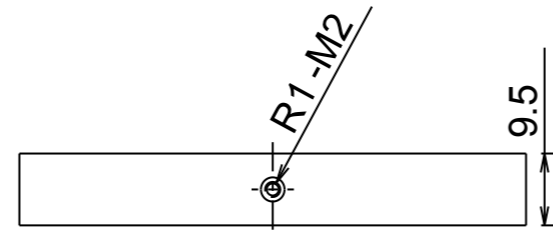
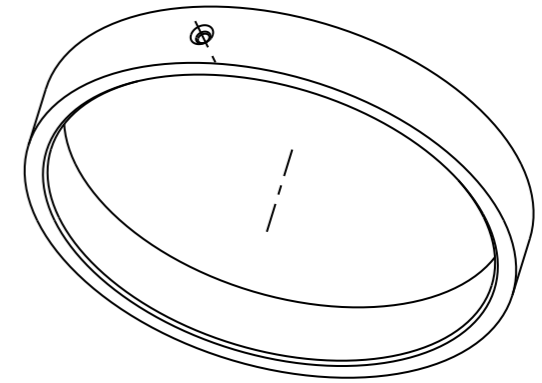
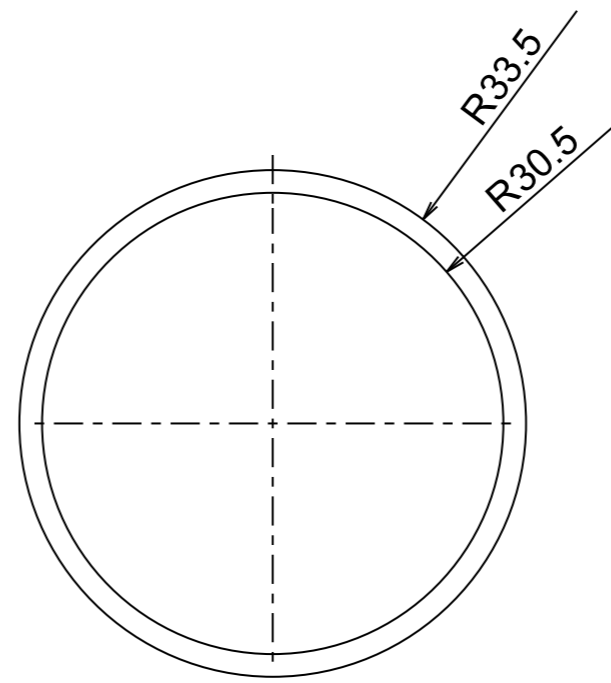
VOIR DETAIL



DETAIL B  
ECHELLE 6.000



Volant d'inertie



Anneau garde-vapeur  
fixé sur le corps

